



Strategic Plan Initiative

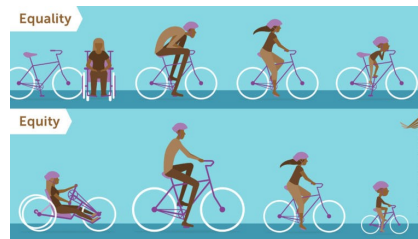
EQUITABLE ACCESS — C.1.a: Identify and remove barriers to authentic learning and high expectations for our diverse learners.



SUMMARY — By ensuring access to standards-aligned adopted curriculum and differentiated core instruction for each student, this initiative links to the Equitable Access theme of the strategic plan, which supports the six priority student outcomes.

COMPLETED:

- ✓ Used root cause analysis to identify barriers
- ✓ Provided Professional Development for co-teaching
- ✓ Provided same district resources for all students



RESOURCES:

- Continuum of Services [image](#)
- Sound enhancement [video](#)
- Standard classroom technology [images](#)
- Strategic Plan [link](#)

"Everett Public Schools provide universal access to high impact, standards-aligned, Tier 1 instruction. Our classrooms are safe, joyful and inclusive spaces where ALL students are empowered to own their learning and celebrate their growth! Students are eager to come to school." Executive Director Special Services Kelley Clevenger

STUDENT IMPACT:

- More time receiving grade level standards based instruction
- Increase sense of belonging
- Increase student engagement
- Allowing students more choices at graduation

STAFF IMPACT:

- Students will be more engaged in their learning, making classroom management easier
- With co-teaching, working along side colleagues
- Students will have more success creating an opportunity for teachers to have greater job satisfaction

QUESTIONS? PLEASE CONTACT:

Kelley Clevenger, 425-385-5250, lklevenger@everettsd.org